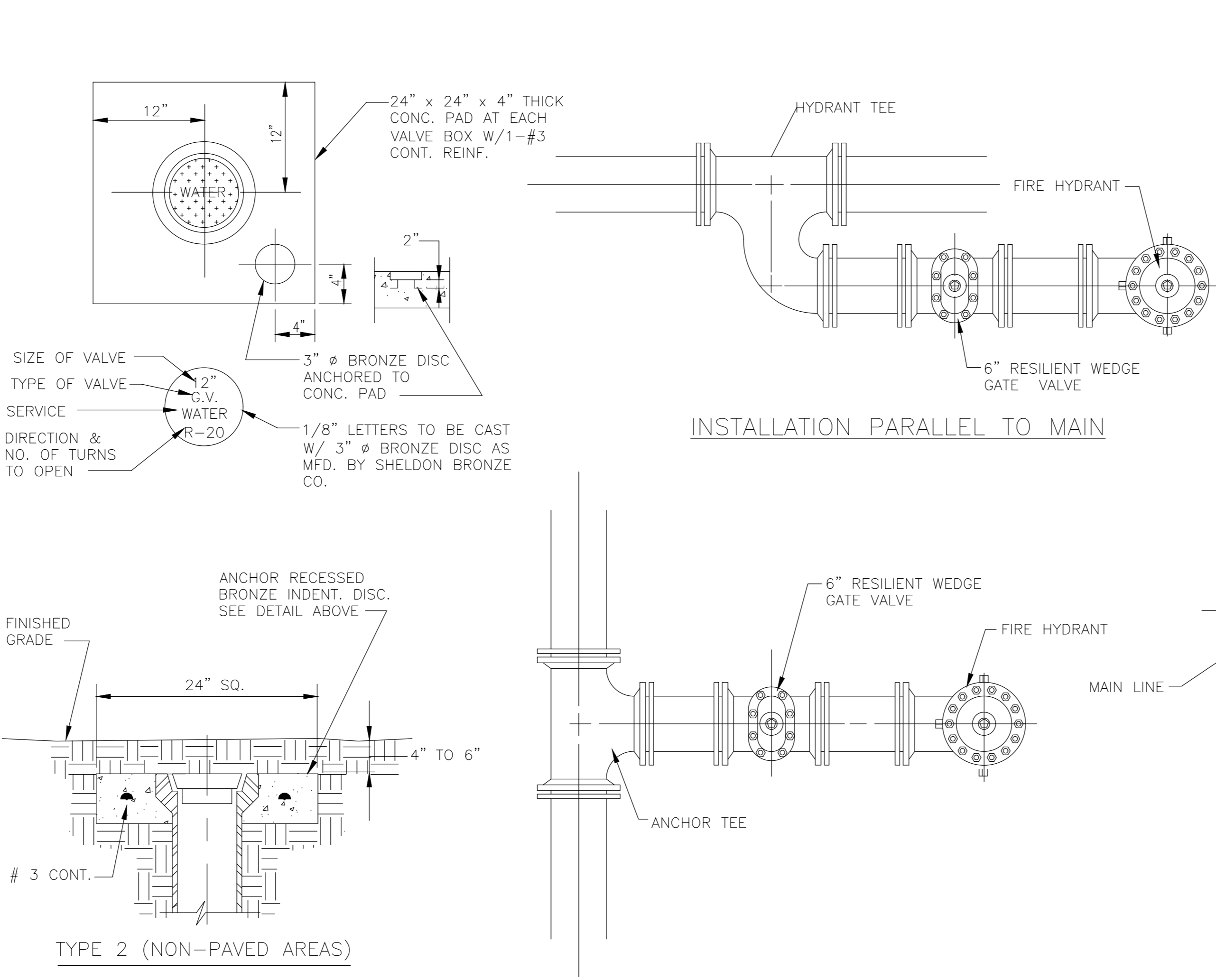


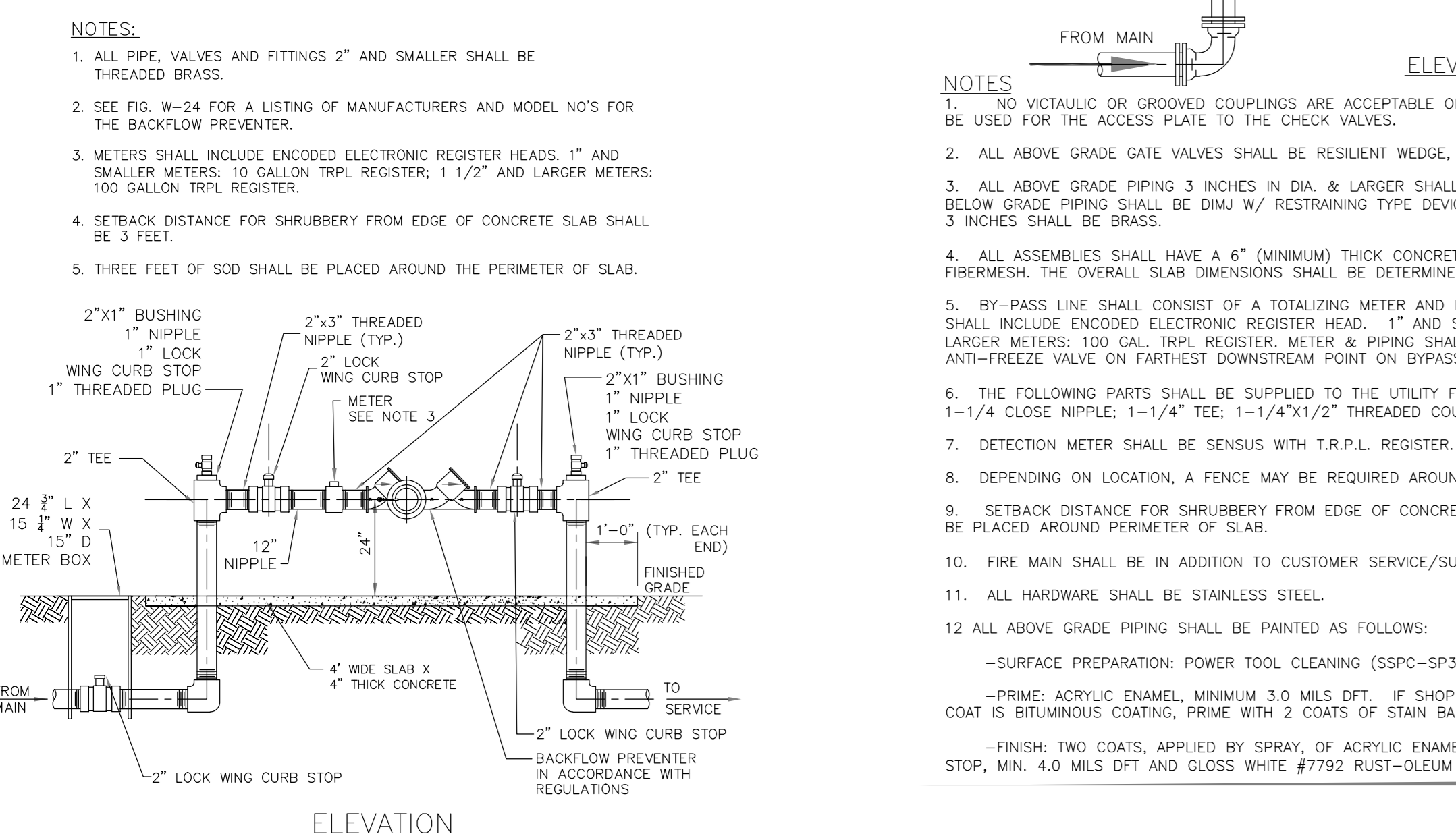
- NOTES:**
- GATE VALVES SHALL BE DUCTILE IRON RESILIENT WEDGE TYPE, RATED AT 200 P.S.I. AND SHALL COMPLY WITH ANSI/AWWA C509.
 - WHERE AN EXTENSION IS REQUIRED, A 6" SDR 35 PVC EXTENSION SHALL BE USED ON VALVE BOX INSTALLATION.
 - VALVE COVER SHALL BE PAINTED BLUE FOR POTABLE WATER MAINS, WHITE FOR RAW WATER MAINS.
 - CONCRETE COLLAR SHALL BE CAST-IN-PLACE; PRECAST CONCRETE IS NOT ACCEPTABLE.
 - SELF-CENTERING ALIGNMENT RING EQUIVALENT TO AMERICAN FLOW CONTROL.
 - VALVES 16" AND LARGER SHALL BE INSTALLED VERTICALLY AND SHALL BE EQUIPPED WITH A BEVEL GEAR OPERATING NUT. MINIMUM COVER OVER OPERATING NUT SHALL BE 30 INCHES.
 - VALVES 18" AND LARGER SHALL INCLUDE A NRS BYPASS VALVE.

1 GATE VALVE AND BOX DETAIL
SCALE: N.T.S.

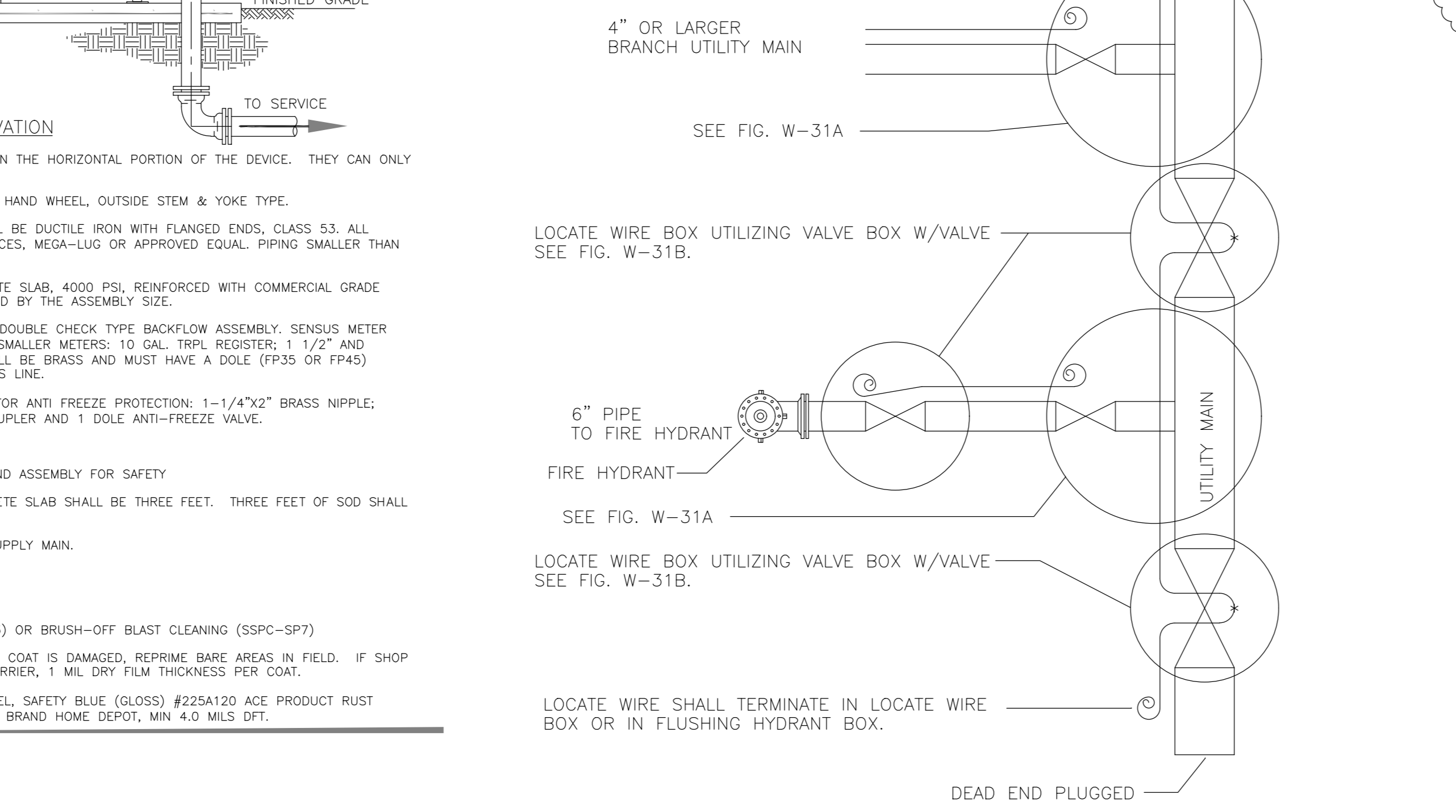


2 FIRE HYDRANT ASSEMBLY DETAIL
SCALE: N.T.S.

- LOCATE WIRE NOTES:**
- ALL PIPE INSTALLED BY OPEN CUT WITHIN THE CITY OF PALM COAST'S WATER, SANITARY SEWER, REUSE WATER OR RAW WATER SYSTEMS SHALL INCLUDE A 10 GAUGE, SINGLE STRAND THIN SOLID COPPER CLAD STEEL TRACING WIRE WITH 30 MIL HDPE JACKET. TRACING WIRE SHALL HAVE A BREAK LOAD OF 513 LBS AND BE COLOR CODED AS FOLLOWS:
a. WHITE: RAW WATER
b. BLUE: POTABLE WATER
c. LAVENDER: REUSE WATER
d. GREEN: SANITARY SEWER FORCE MAIN AND LOW PRESSURE SEWER.
 - THE TRACING WIRE MUST BE INSTALLED DIRECTLY BELOW THE PIPE AND BROUGHT TO THE SURFACE AT EACH VALVE BOX LOCATION. WIRE SHALL EXTEND A MINIMUM OF 12" ABOVE GRADE AT EACH INTERVAL, AND BE COILED AND PLACED IN A VALVE BOX.
 - WIRE SHALL NOT BE FASTENED OR COILED TO VALVE OPERATING NUT OR ANY FITTING.
 - THE ENTIRE LOCATING SYSTEM SHALL BE TESTED TO DETERMINE ITS RELIABILITY. TEST SHALL BE CONDUCTED BY THE CONTRACTOR AND APPROVED BY THE CITY OF PALM COAST BEFORE ACCEPTANCE OF THE SYSTEM. WHERE INSTALLED UNDER PAVEMENT AREAS, TESTING SHALL BE DONE PRIOR TO PLACEMENT OF PAVEMENT, UNLESS APPROVED OTHERWISE BY THE CITY OF PALM COAST.
 - LOCATING WIRE SHALL TERMINATE WITHIN AN ACTIVE VALVE BOX (WITH A VALVE) SEE DETAIL SHIT. W-31B.
 - "*" INDICATES THAT THE WIRES ARE CONNECTED TOGETHER.
 - "." INDICATES A WIRE PIGTAIL (12" LONG).

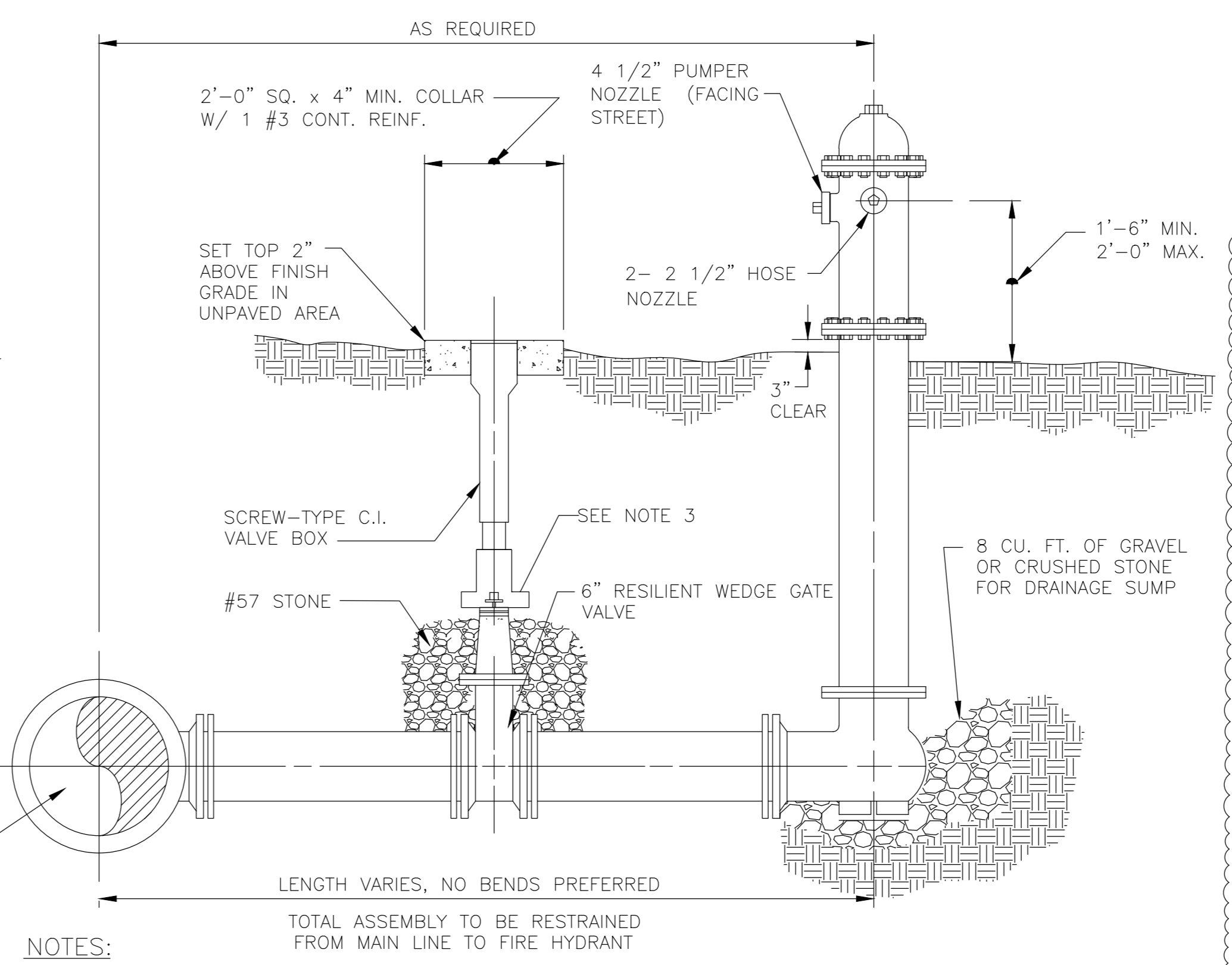


3 WATER METER ASSEMBLY, 2" AND SMALLER
SCALE: N.T.S.



4 DEDICATED FIRE FLOW ASSEMBLY
SCALE: N.T.S.

5 LOCATE WIRE INSTALLATION DETAIL FOR WATER MAINS
SCALE: N.T.S.



- NOTES:**
- A TAPPING SLEEVE WITH VALVE AND BOX SHALL BE INSTALLED WHEN CONNECTING A PROPOSED FIRE HYDRANT TO AN EXISTING MAIN, OR RELOCATING AN EXISTING FIRE HYDRANT.
 - HYDRANTS SHALL HAVE BREAKAWAY SECTION OR REMOVABLE BARREL.
 - SELF-CENTERING ALIGNMENT RING EQUIVALENT TO AMERICAN FLOW CONTROL.
 - ALL ABOVE GRADE PIPING SHALL BE PAINTED AS FOLLOWS:
-SURFACE PREPARATION: POWER TOOL CLEANING (SSPC-SP3) OR BRUSH-OFF BLAST CLEANING (SSPC-SP7).
-PRIME: ACRYLIC ENAMEL, MINIMUM 3.0 MILS DFT. IF SHOP COAT IS DAMAGED, REPRIME BARE AREAS IN FIELD. IF SHOP COAT IS BITUMINOUS COATING, PRIME WITH 2 COATS OF STAIN BARRIER, 1 MIL DRY FILM THICKNESS PER COAT.
-FINISH: TWO COATS, APPLIED BY SPRAY, OF ACRYLIC ENAMEL, SAFETY BLUE (GLOSS) #225A120 ACE PRODUCT RUST STOP, MIN. 4.0 MILS DFT AND GLOSS WHITE #7792 RUST-OLEUM BRAND HOME DEPOT, MIN 4.0 MILS DFT.

6 RESTRAINED JOINT DETAIL AND TABLES
SCALE: N.T.S.

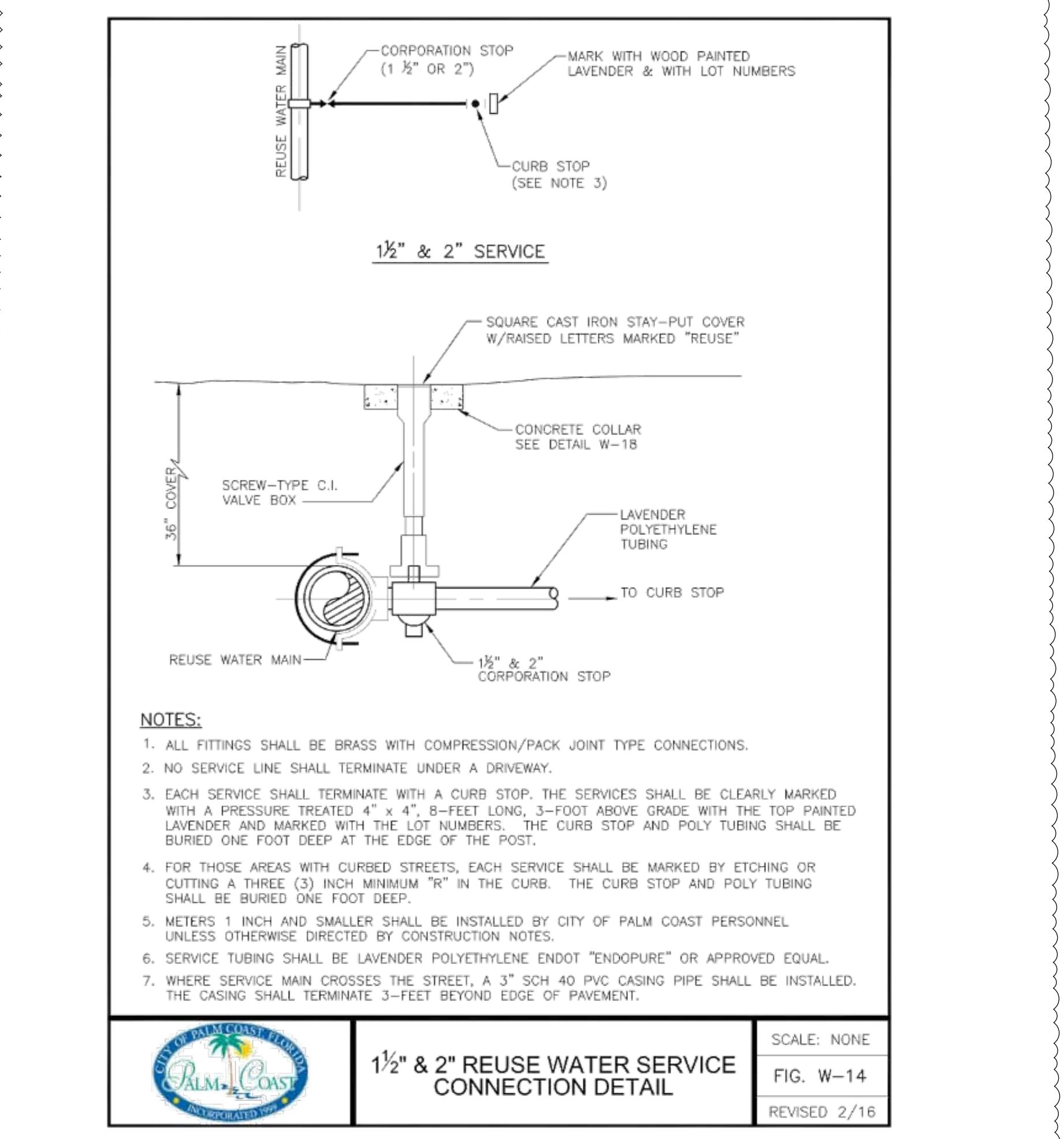
TABLES SHOW MINIMUM LENGTH OF PIPE EACH WAY FROM FITTING FOR WHICH RESTRAINT IS REQUIRED. TABLE APPLIES TO DUCTILE IRON PIPE FOR THE FOLLOWING CONDITIONS:

TEST PRESSURE: 150 PSIG
SOIL TYPE: SAND SILT
COVER DEPTH: 3 FT. (MIN.)
SAFETY FACTOR: 1.5
TRENCH TYPE: 2

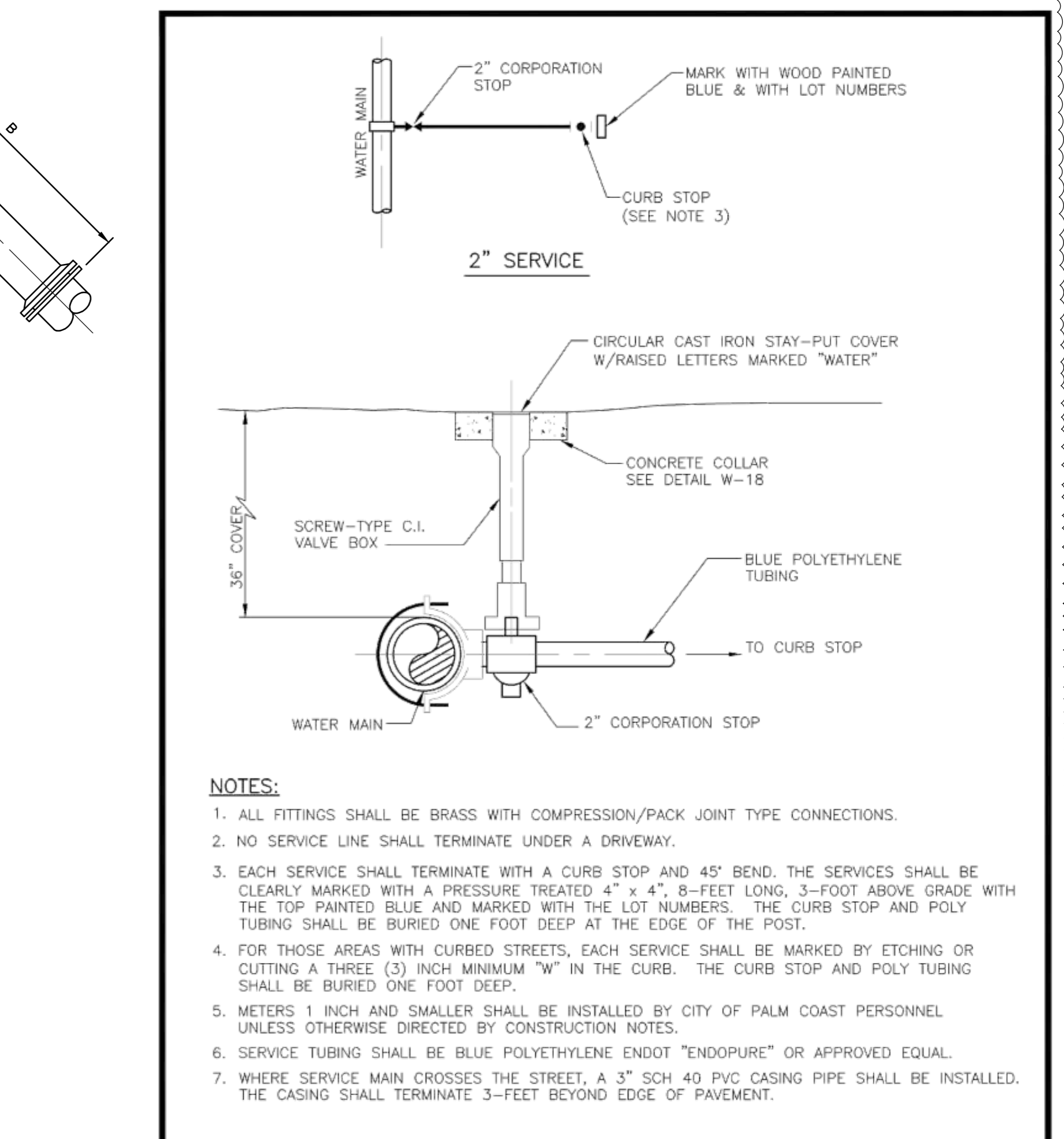
VALUES IN PARENTHESIS (X) ARE FOR PIPE ENCASED IN POLYETHYLENE.

FITTING	SCHEDULE 40 (EIGHTY FOUR (84) POUNDS PER FOOT) HORIZONTAL STEEL PIPE				SCHEDULE 40 (EIGHTY FOUR (84) POUNDS PER FOOT) HORIZONTAL DUCTILE IRON PIPE			
	12"	14"	16"	18"	12"	14"	16"	18"
TEE	12	12	12	12	12	12	12	12
PLUG	12	12	12	12	12	12	12	12
BEND	12	12	12	12	12	12	12	12

6 RESTRAINED JOINT DETAIL AND TABLES
SCALE: N.T.S.



8 1-1/2" & 2" REUSE WATER SERVICE CONNECTION
SCALE: N.T.S.



2" POTABLE WATER SERVICE CONNECTION DETAIL
SCALE: NONE
FIG. W-12
REVISED 2/16

7 2" POTABLE WATER SERVICE CONNECTION DETAIL
SCALE: N.T.S.

C:\Users\WRA\OneDrive - Jacobs\Desktop\Projects\Gumbo\PERMIT\UPDATE\DATE\C260-C264.dwg 9/15/2025 12:57 PM

JACOBS
777 Main St
Fort Worth, TX 76102
P 817.735.6000
F 817.735.6148
www.jacobs.com

Discipline Principal, FL License No. 40772
2025-09-15
This item has been digitally signed and sealed by Mitchell Lee Griffin on the date adjacent to the seal.
Signature must be verified on any electronic copies.

REVISIONS

NO.	DATE	DESCRIPTION
1.0	2025-06-20	TECHNICAL SITE PLAN APPLICATION
2.0	2025-09-15	TECHNICAL SITE PLAN - 2ND SUBMISSION

Drawn By: CEW
Approved By: MG
Design Team: Civil

GUMBO
PROJECT ADDRESS:
1035 TOWN CENTER BLVD,
PALM COAST, FL 32164
Project Number: K4018368

TYPICAL CONSTRUCTION DETAILS
Discipline: CIVIL
Scale: NTS
Sheet Size: A0 - 33.1" x 46.8"

Sheet Number:
C-262
Current Rev: 2.0
Phase: TECHNICAL SITE PLAN APPLICATION
Model Name: GUMBO-CIVIL
Native File Format: Autodesk Civil 3D 2022