



City of PALM COAST

Utility Department

2 Utility Drive
Palm Coast, FL 32137
386-986-2360

12/09/2025

Kimley-Horn & Associates, Inc.
1530 Cornerstone Blvd.
Ste. 200
Daytona, FL 32117

Re: Service Availability for **Seminole Woods Mixed Use PUD (Parcel# 29-12-31-0000-01010-0000, 28-12-31-0000-01010-0000)**, Palm Coast Florida City of Palm Coast, Flagler County

This letter confirms that City of Palm Coast is the water and wastewater service provider to the referenced property in Flagler County, Florida. Enclosed are copies of the system maps of the City's utility system showing existing water and wastewater mains in the area, as the City believes that they exist, for your use in project design. No representation is made as to the precise location of facilities. It is your responsibility to ensure that utility lines and other facilities are located at locations and in a sufficient condition to meet the requirements of your proposed development and the requirements of the City.

If a main extension is required, the design, permitting, and construction of the extension are your responsibility. Plan review by the City is required for all commercial projects and those projects involving a main extension. Construction must meet City Standards and Specifications. The Standards and Specifications Manual, with Standard Details, is available to you via City web-site or regular mail. All such matters must be memorialized by written city approvals.

When you are ready to proceed, provide all required City application forms, the annexation petition required by section 49-53 (e) of the City Code along with one copy of the FDEP Permit Applications (fax, or include with plan submittal.) The City will redline the Operating Utility information, and return it to you, for you to incorporate onto the Applications. Upon completion, provide the number of completed, signed/sealed original Applications required by FDEP, plus one original for the City's files.

Please note that all applicable fees must be paid to the City, and plans must be stamped "Authorized For Construction," before the FDEP permit applications will be returned for your submittal to FDEP. Upon plan approval, the City will conduct construction inspection. Also, legal documents as necessary to convey the new facilities to the City must be completed and approved by the City, and FDEP/HRS clearance must be received **prior to service** being provided. Sample legal documents will be provided to you by the City to assist you during this phase of the project. The City will implement the annexation petition in accordance with its terms.

If you have any questions please feel free to contact me at (386) 986-2355.

Sincerely,

Samantha Borges

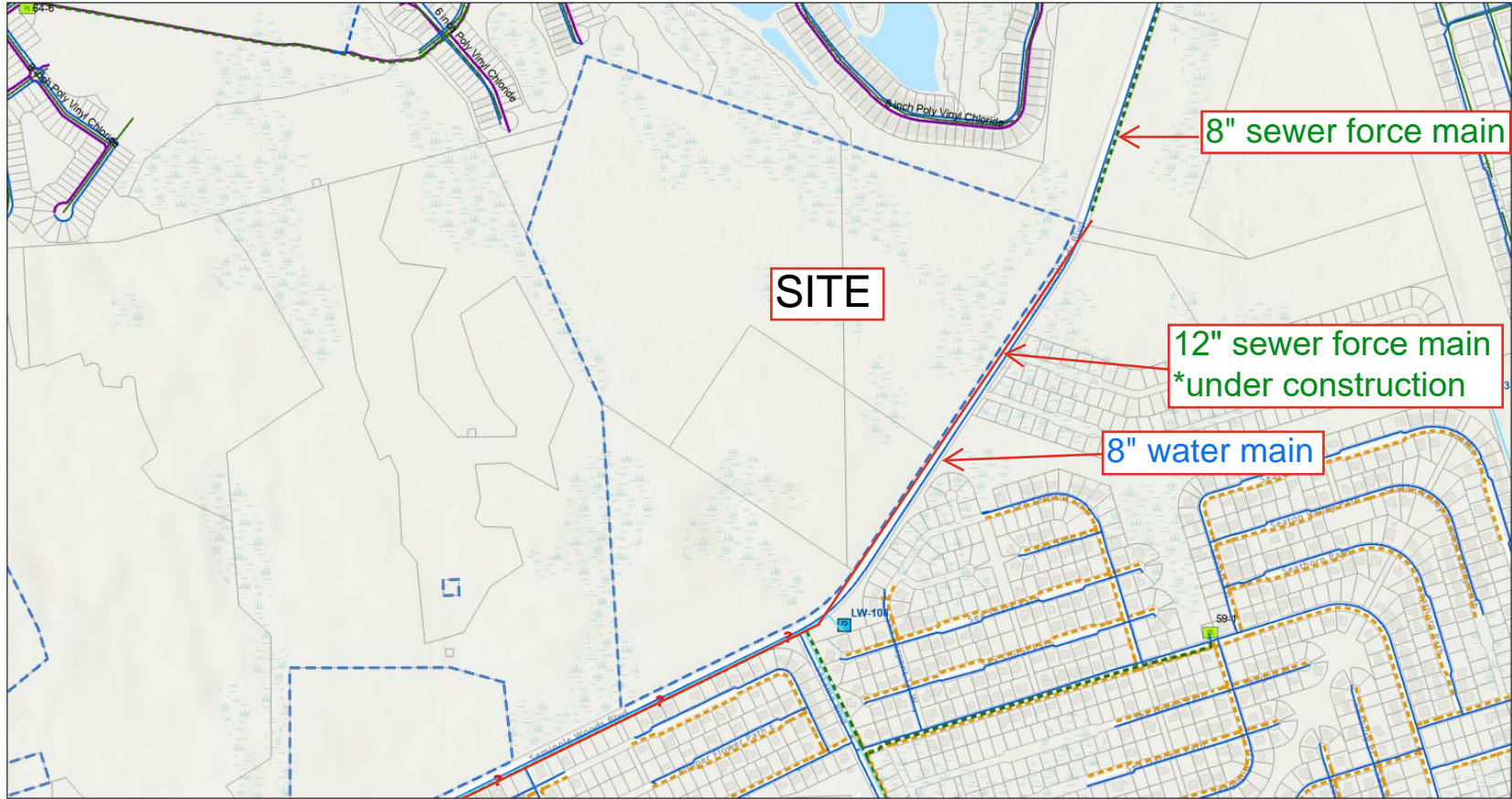
Samantha Borges
Utility Development Review Specialist (sborges@palmcoastgov.com)



please recycle

palmcoastgov.com

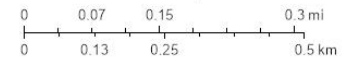
ArcGIS Web Map



12/9/2025, 2:57:48 PM

1:8,434

- | | | |
|--|--|---|
| <ul style="list-style-type: none"> ? wMiscellaneous wPressurizedMain --- Abandoned, City of Palm Coast, Potable Water — Active, City of Palm Coast, Potable Water — Active, City of Palm Coast, Raw Water wNetworkStructure ■ ProductionWell, Active, City of Palm Coast | <ul style="list-style-type: none"> ssNetworkStructure ■ PumpStation, Active, City of Palm Coast ssGravityMain — Collector, Active, City of Palm Coast ssPressurizedMain --- PEPforce, Active, City of Palm Coast --- Force, Active, City of Palm Coast | <ul style="list-style-type: none"> Reclaim PressurizedMain — DistributionMain, Active, City of Palm Coast Flagler County Parcels --- Palm Coast City Limits World_Hillshade |
|--|--|---|



Esri, NASA, NGA, USGS, FEMA, City of Palm Coast, Flagler Property Appraiser, Sources: Esri, TomTom, Garmin, FAO, NOAA, USGS, © OpenStreetMap contributors, and the GIS User Community, ITC / GIS