

## City of Palm Coast, Florida Agenda Item

**Agenda Date:** July 14, 2026

**Agenda Item:** E.2

<b>Department</b> STORMWATER AND ENGINEERING <b>Division</b> CONSTRUCTION MGT AND ENGINEERING	<b>Amount</b> <b>Org/Account #</b>
<b>Subject:</b> PRESENTATION - APPROVAL TO UTILIZE UNUSED PRE-APPROVED PROJECT FUNDS	
<b>Presenter:</b> Carl L Cote, Director of Stormwater and Engineering	
<b>Attachments:</b> 1. Presentation	
<b>Background:</b>  Staff will make a recommendation to utilize unused, pre-approved funds, from the Indian Trails Sports Complex Parking Expansion Project to advance the construction of the additional parking at the Southern Recreation Center.	
<b>Recommended Action:</b> <b>FOR PRESENTATION ONLY</b>	



PR  GRESS

**INDIAN TRAILS SPORTS  
COMPLEX PARKING LOT**

## ITSC ADDITIONAL PARKING

### BUDGET

**COUNCIL APPROVAL: \$1,500,000**

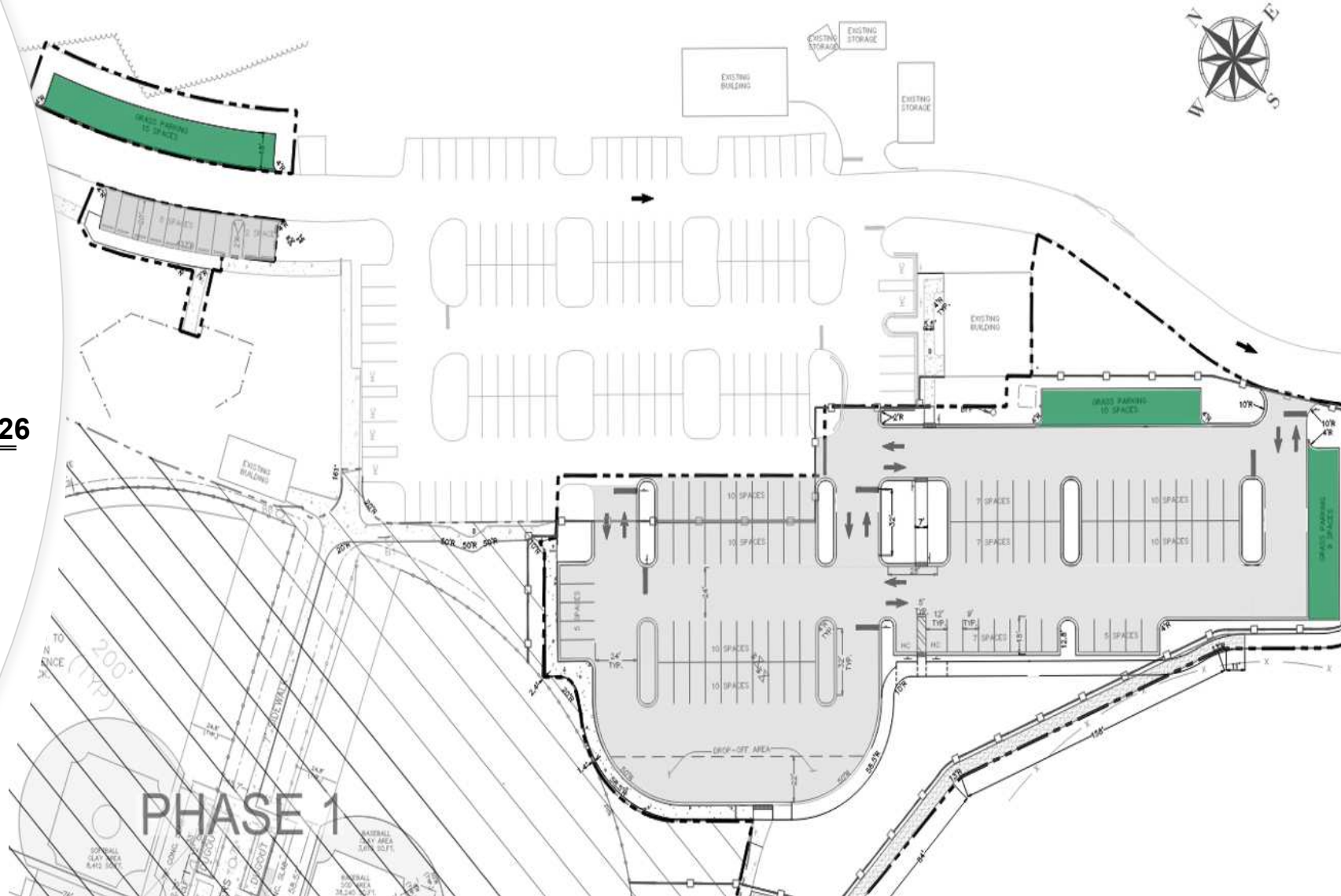
#### PROJECT COSTS:

- PERMITTING / TESTING: \$14,680.50
  - VENDORS: \$150,197.24
  - PUBLIC WORKS EXPENSES: \$375,122.26
- TOTAL\*: \$540,000.00**

*\*Actual Final Costs Pending*

**Funding Balance ~ \$960,000**

**Capital Projects Fund 46.71%**  
**Recreation Impact Fees 53.29%**



\$960,000

- 1 ITSC: New Field Safety Netting
- 2 ITSC: New Batting Cages  
(Slab & Power by City, Netting by PCLL)
- 3 ITSC: Replace Fencing with 10' High
- 4 SRC: Additional Parking / Sitework
- 5 Skate Park

**\$110,000**

**1**

## ITSC: New Field Safety Netting

### PROJECT DETAILS

- Field #2 (Large Baseball Field)
- 21-Foot Tall Netting on sidelines and possibly a partial extent of outfield fence
- BSN Sports Piggyback Contract (Furnish and Install)



**\$40,000**

**2**

## ITSC: New Batting Cages

### PROJECT DETAILS

- 5 batting cages
- Construction by Public Works utilizing contracts for concrete material and electrical work
- Little League to furnish and install netting



**\$10,000**

**3**

## ITSC: Replace Fencing @ 1 Bullpen

### PROJECT DETAILS

- Field #2
- Extents
  - 126 Linear Feet
  - 10 Feet Tall
- To be Bid  
(Furnish and Install)



\$800,000

4

## SRC: Additional Parking / Sitework

### PROJECT DETAILS

- Add up to 115 Parking Spaces\*
  - Site Clearing
  - Grading
  - Stormwater (pipe, structures, ponds)
  - Curbing, Sidewalks, Paths
  - Paving & Striping
  - Landscaping
  - Site Lighting

*\*Scope will be modified to match available funding*



**\$TBD**

**5**

**New Skatepark**

**PROJECT DETAILS**

- Unknown



## WADSWORTH PARK SKATEPARK

Flagler County, FL

- Size: 20,000+/- SF
- Type: Above Ground - Prefabricated
- Company: American Ramp Company
- Year: 2025 – 60% Replacement of Prefabricated Components
- Cost: \$240,000



## **RALPH CARTER PARK SKATEPARK**

Palm Coast, FL

- Size: 4,900+/- SF
- Type: Above Ground - Prefabricated
- Company: American Ramp Company
- Year: 2009
- Cost: \$74,800 (Components only)





## PUBLIC SKATEPARK PLANNING - HOW MUCH DO YOU NEED?

Determine your area's "Level of Service," which describes the performance of a system. In this case, the access to legal, safe and accessible places to skate in your area. This information can help the city better understand what your community needs.



### 10,000 SQ. FT. OF PROPER CONCRETE SKATEPARK FOR EVERY 25,000 RESIDENTS

10,000 square feet may sound like a large area. However, it's about the same size as a baseball field's infield area. Two doubles tennis courts are roughly 14,000 sq. ft.

#### CALCULATE YOUR CITY'S SKATEPARK SERVICE NEED USING SHORTHAND MATH!

$\frac{\text{SKATEPARK SERVICE NEEDS GUIDE}}{\text{(square footage of total city need)}} \times \text{TOTAL CITY POPULATION} = \text{TOTAL SKATEPARK SERVICE NEED (sq. ft.)}$   
 $\text{TOTAL SKATEPARK SERVICE NEED (sq. ft.)} - \text{EXISTING SKATEPARK SERVICE (sq. ft.)} = \text{REMAINING SKATEPARK SERVICE NEED (sq. ft.)}$

That remaining need is a percentage of the total need. Use this number to describe your city's "Level of Service."

Example: 100,000 people in town.  $100,000 / 2.5 = 40,000$  sq. ft. total need. 20,000 sq. ft. concrete skatepark in town already.  $40,000$  sq. ft. total need -  $20,000$  sq. ft. existing =  $20,000$  sq. ft. remaining need.  $20,000$  out of  $40,000$  is 50%. The city has a skatepark service level of 50% (meaning the city is halfway to providing enough skatepark space)

\*Due to economies of scale, larger cities—those with 200,000+ populations—can often meet their needs with one neighborhood skatepark for every 50,000 people.

To learn more about how much skatepark is needed, use the Skatepark Adoption Model at [skatepark.org](http://skatepark.org)

# SKATEPARK TYPOLOGY & COST EXAMPLES

**SKATE DOT/SPOT**  
(1-5,000 SQ. FT.)



**LA GRANGE, IL**  
[TSP PARK #587]  
SIZE: 2,000 SQ. FT.  
SERVES: 5/20 MAX CAPACITY  
COST\*: \$112,648  
\$55/SQ.FT

**SMALL SKATEPARK**  
(1-5,000 SQ. FT.)



**MEREDITH, NH**  
[TSP PARK #587]  
SIZE: 4,000 SQ. FT.  
SERVES: 7/40 MAX CAPACITY  
COST\*: \$315,090  
\$78/SQ.FT

**NEIGHBORHOOD SKATEPARK**  
(10,000-20,000 SQ. FT.)



**MACON, GA**  
[TSP PARK #529]  
SIZE: 20,000 SQ. FT.  
SERVES: 20/200 MAX CAP  
COST\*: \$1,241,000  
\$62/SQ.FT

**SMALL NEIGHBORHOOD SKATEPARKS**  
(5-10,000 SQ. FT.)



**BAR HARBOR, ME**  
[TSP PARK #532]  
SIZE: 8,775 SQ. FT.  
SERVES: 8/60 MAX CAPACITY  
COST\*: \$648,790  
\$74/SQ.FT

**LARGE NEIGHBORHOOD SKATEPARK**  
(20-30,000 SQ. FT.)



**ANN ARBOR, MI**  
[TSP PARK #467]  
SIZE: 20,000 SQ. FT.  
SERVES: 20/200 MAX CAP  
COST\*: \$1,501,980  
\$75/SQ.FT

## POMPANO BEACH SKATEPARK

Pompano Beach, FL

- Size: 20,000+/- SF
- Type: Concrete
- Company: New Line Skateparks
- Year: Under Construction
- Cost: \$1,800,000



## **SOUTH BEACH PARK SKATEPARK**

Jacksonville Beach,  
FL

- Size: 23,500+/- SF
- Type: Concrete
- Company: Team Pain Skateparks
- Year: 2017
- Cost: \$1,9864,461



## ARTISTS WALK SKATEPARK

Jacksonville, FL

- Size: 30,000+/- SF
- Type: Concrete
- Company: California Skateparks
- Year: 2024
- Cost: Bundled into broader \$8,800,000 Linear Park connection between the Northbank and Southbank Riverwalks



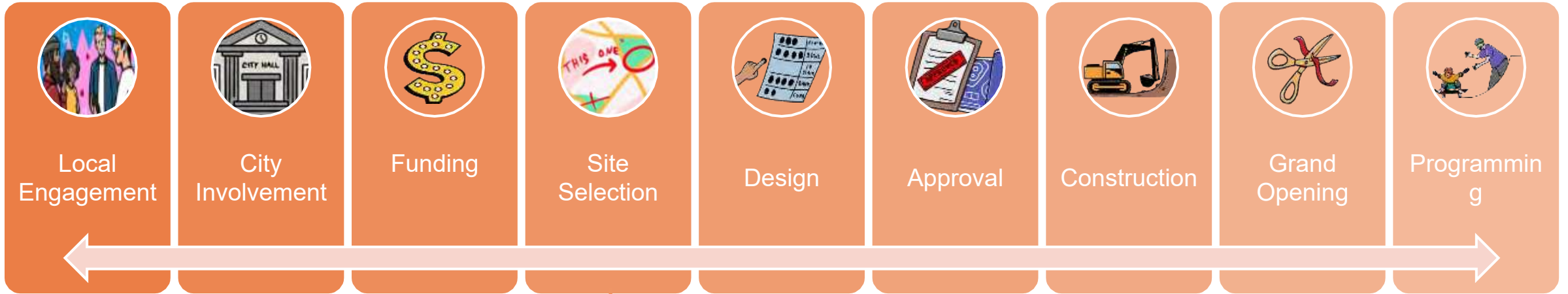
## C JAY SMITH SKATE PLAZA AND PUMP TRACK

Newnan, GA

- Size: 34,000+/- SF
- Type: Concrete
- Company: New Line Skateparks
- Year: 2021
- Cost: Bundled into the broader, multi-million dollar revitalization of the park



# HOW DO SKATEPARKS GET MADE?



## CONSIDERATIONS

- Proximity to Homes
- Existing Developed Site = Cost Savings (parking, restrooms, etc.)
- Size & Design Considerations
  - Future Expansion
  - Small / Large Neighborhood or Regional
  - Users; Skate, Bike, Ages
  - Pump Track?
- Funding Source(s)

